



P/E E27 - SPECIAL FINISHING



SPECIAL FINISHING

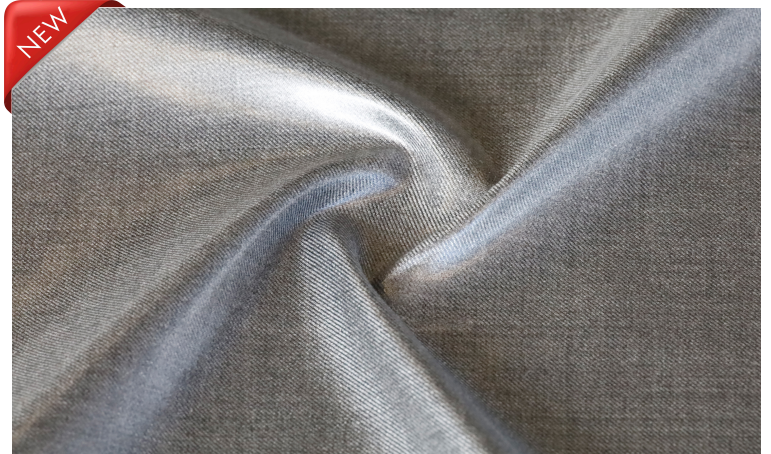
Art. 7248 (1740 TECH)

COMPOSITION: 100% SILK

WIDTH: 0 cm / 0 cm

WEIGHT: 0 g/ml - 0 g/m²

COLOURS: Ask for colour card!



Art. 4696 (709) BRINATO

SILK ORGANZA WITH METALLIC FROSTING

WEAVE STRUCTURE: TELA

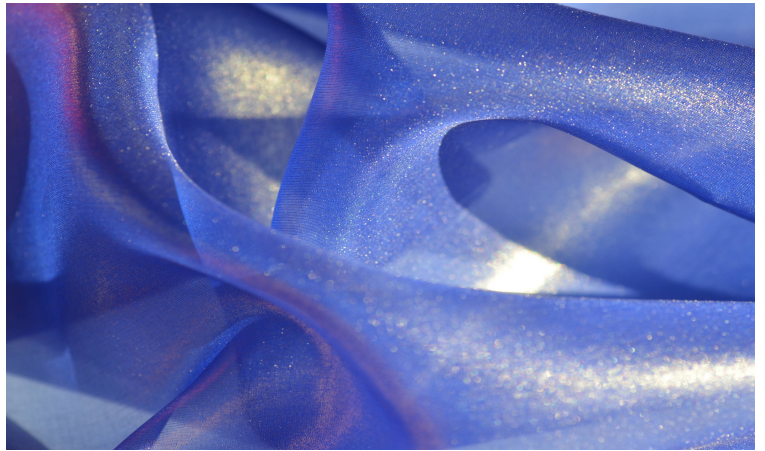
COMPOSITION: 100% SILK

WIDTH: 145 cm / 149 cm

WEIGHT: 38 g/ml - 26 g/m²

COLOURS: Ask for colour card!

MIN: 35 m. Min



Art. 7035 Des. 62425 (2933) LASERATO

ORGANZA WITH LASER-CUT DESIGN

WEAVE STRUCTURE: RASO DA 5

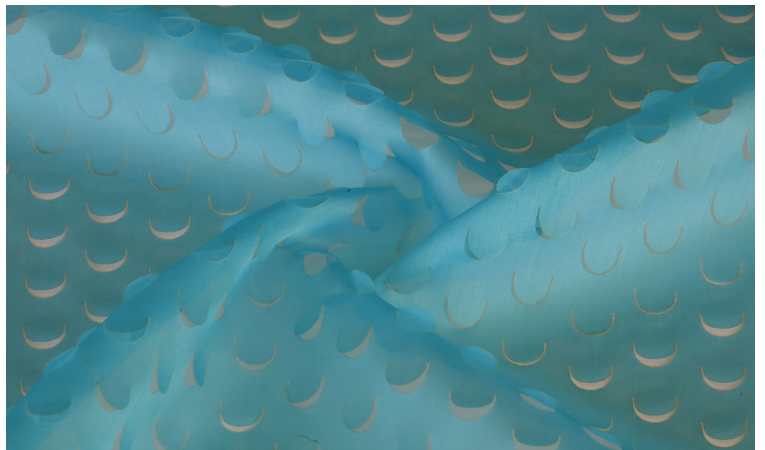
COMPOSITION: 100% SILK

WIDTH: 147 cm / 151 cm

WEIGHT: 47 g/ml - 31 g/m²

COLOURS: Piece dyed fabric. We can dye any colour

MIN: 35 m. Min



Art. 7035 Des. 62496 (2933) LASERATO

ORGANZA WITH LASER-CUT DESIGN

WEAVE STRUCTURE: RASO DA 5

COMPOSITION: 100% SILK

WIDTH: 136 cm / 151 cm

WEIGHT: 47 g/ml - 31 g/m²

COLOURS: Piece dyed fabric. We can dye any colour

MIN: 35 m. Min



Art. 7269 Des. 1409
(581) LASERATO

SATIN ORGANZA WITH DOTTED LASER DESIGN

COMPOSITION: 100% SILK

WIDTH: 152 cm / 156 cm

WEIGHT: 67 g/ml - 43 g/m²

COLOURS: Only one colour.

MIN: 35 m. Min



Art. 7269 Des. 1410
(581) LASERATO

SATIN ORGANZA WITH DOTTED LASER DESIGN

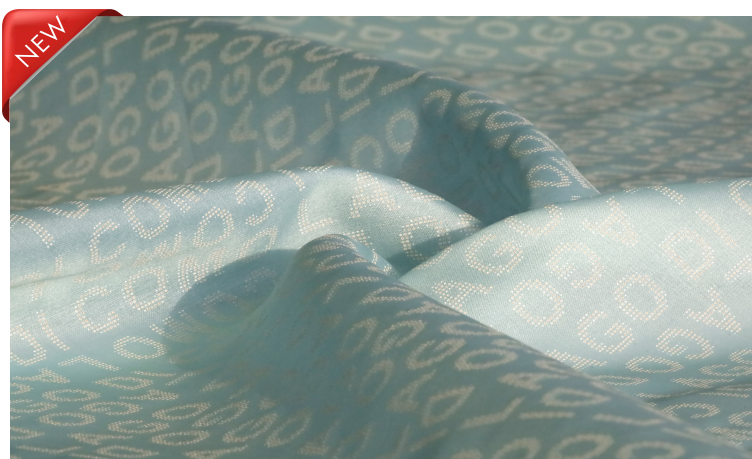
COMPOSITION: 100% SILK

WIDTH: 152 cm / 156 cm

WEIGHT: 67 g/ml - 43 g/m²

COLOURS: Only one colour.

MIN: 35 m. Min



Art. 7245
(709 TECH)

LIGHT ORGANZA WITH TECH-HANDFEEL FINISH

WEAVE STRUCTURE: TELA

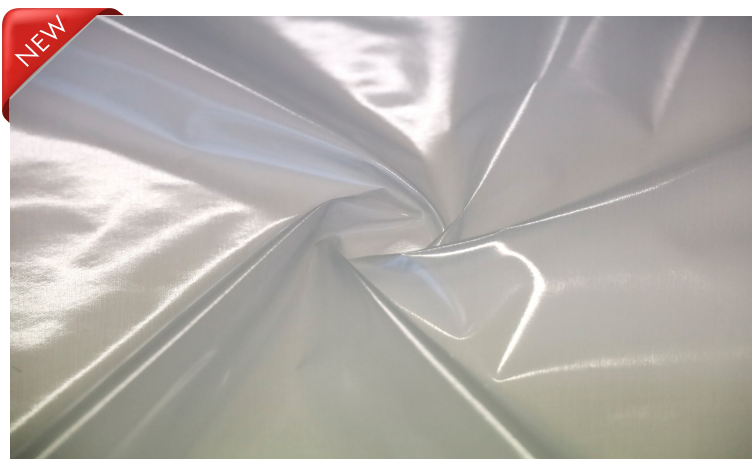
COMPOSITION: 100% SILK

WIDTH: 146 cm / 150 cm

WEIGHT: 80 g/ml - 53 g/m²

COLOURS: Ask for colour card!

MIN: 35 m. Min



Art. 5812
(1812) M.ENERGY

SILK POPELINE WITH SOFT FINISH

WEAVE STRUCTURE: TELA

COMPOSITION: 100% SILK

WIDTH: 87 cm / 91 cm

WEIGHT: 85 g/ml - 93 g/m²

COLOURS: Ask for colour card!

MIN: 35 m. Min



**Art. 7270 Des. 1409
(5284) LASERATO**

TAFFETA WITH DOTTED LASER DESIGN

COMPOSITION: 60%POLYESTER 40%SILK

WIDTH: 140 cm / 144 cm

WEIGHT: 85 g/ml - 59 g/m2

COLOURS: Only one colour.

MIN: 35 m. Min



**Art. 7270 Des. 1410
(5284) LASERATO**

TAFFETA WITH DOTTED LASER DESIGN

COMPOSITION: 60%POLYESTER 40%SILK

WIDTH: 140 cm / 144 cm

WEIGHT: 85 g/ml - 59 g/m2

COLOURS: Only one colour.

MIN: 35 m. Min



**Art. 4697
(1332) BRINATO**

SILK CREPE DE CHINE WITH METALLIC FROSTING

WEAVE STRUCTURE: TELA

COMPOSITION: 100%SILK

WIDTH: 138 cm / 142 cm

WEIGHT: 87 g/ml - 61 g/m2

COLOURS: Ask for colour card!

MIN: 35 m. Min



**Art. 5149
(1178) M.ENERGY**

SATIN WITH SOFT FINISH

WEAVE STRUCTURE: RASO DA 5

COMPOSITION: 100%SILK

WIDTH: 139 cm / 143 cm

WEIGHT: 93 g/ml - 65 g/m2

COLOURS: Ask for colour card!

MIN: 35 m. Min



**Art. 1440 Des. 2261
(1231)M.PETALO**

SILK YARN-DYED SHIRTING WITH SOFT FINISH

WEAVE STRUCTURE: TELA

COMPOSITION: 100%SILK

WIDTH: 146 cm / 150 cm

WEIGHT: 94 g/ml - 63 g/m2

COLOURS: Ask for colour card!

MIN: 35 m. Min



**Art. 5147
(1332) M.ENERGY**

CREPE DE CHINE WITH SOFT FINISH

WEAVE STRUCTURE: TELA

COMPOSITION: 100%SILK

WIDTH: 132 cm / 136 cm

WEIGHT: 94 g/ml - 69 g/m2

COLOURS: Ask for colour card!

MIN: 35 m. Min



**Art. 7157
(1178)M.PETALO**

CREPE SATIN 100% SILK WITH SOFT FINISHING

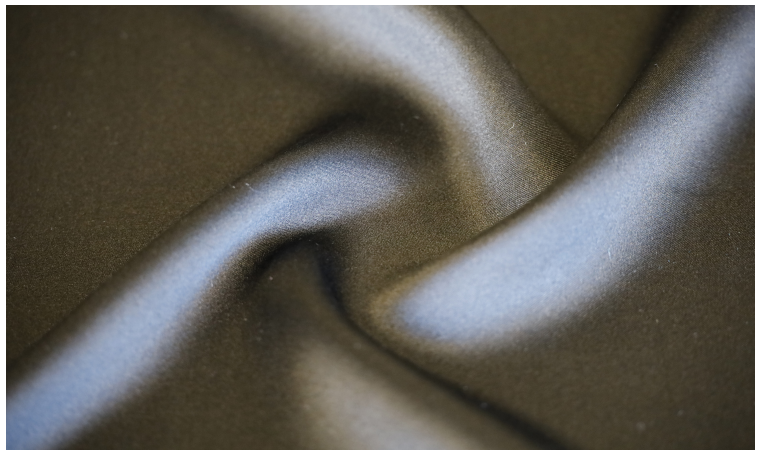
COMPOSITION: 100%SILK

WIDTH: 134 cm / 138 cm

WEIGHT: 95 g/ml - 69 g/m2

COLOURS: Ask for colour card!

MIN: 35 m. Min



**Art. 4725
(1178) BRINATO**

SILK SATIN WITH METALLIC FROSTING

WEAVE STRUCTURE: RASO DA 5

COMPOSITION: 100%SILK

WIDTH: 136 cm / 140 cm

WEIGHT: 97 g/ml - 69 g/m2

COLOURS: Ask for colour card!

MIN: 35 m. Min



**Art. 7246 Des. 861
(1139 TECH)**

LIGHT CO/SE ORGANZA WITH TECH-HANDFEEL FINISH

WEAVE STRUCTURE: TELA

COMPOSITION: 68% COTTON 32% SILK

WIDTH: 151 cm / 155 cm

WEIGHT: 115 g/ml - 74 g/m²

COLOURS: Ask for colour card!

MIN: 35 m. Min



**Art. 7249
(1332 TECH)**

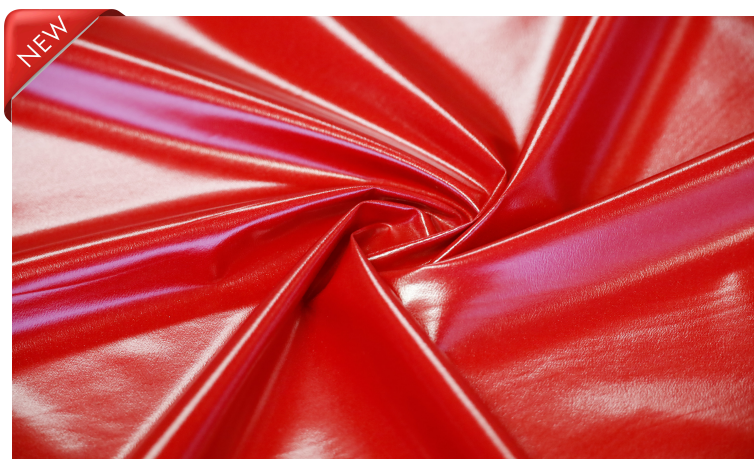
CREPE DE CHINE WITH TECH-HANDFEEL FINISH

COMPOSITION: 100% SILK

WIDTH: 126 cm / 130 cm

WEIGHT: 121 g/ml - 93 g/m²

COLOURS: Ask for colour card!



**Art. 5852 Des. 3600
(1460) M.AMIDO**

LIGHT COTTON ART.1460 WITH STARCH FINISHING

WEAVE STRUCTURE: TELA

COMPOSITION: 100% COTTON

WIDTH: 144 cm / 148 cm

WEIGHT: 128 g/ml - 87 g/m²

COLOURS: Ask for colour card!

MIN: 60 m. Min



**Art. 7226 Des. 1406
(7826) LASER**

SILK/VISCOSE SATIN WITH LASER-SCRATCHED DESIGN

COMPOSITION: 58% VISCOSE 42% SILK

WIDTH: 145 cm / 149 cm

WEIGHT: 145 g/ml - 97 g/m²

COLOURS: Piece dyed fabric. We can dye any colour

MIN: 70 m. Min



Art. 3660 Des. 1405
TARYN LASER

CUPRO WITH LASER-SCRATCHED DESIGN

COMPOSITION: 100% CUPRO

WIDTH: 144 cm / 148 cm

WEIGHT: 170 g/ml - 115 g/m2

COLOURS: Piece dyed fabric. We can dye any colour

MIN: 70 m. Min



Art. 7058
(2635) CINZATO

LIGHT MIKADO WITH CINZ.FINISHING

COMPOSITION: 88% POLYESTER 12% SILK

WIDTH: 154 cm / 158 cm

WEIGHT: 175 g/ml - 111 g/m2

COLOURS: Only one colour.

MIN: 35 m. Min



Art. 4337
(1047) ANNELLA

VISCOSE / ACETATE CADY, VINTAGE FINISH

WEAVE STRUCTURE: RASO DA 5

COMPOSITION: 50% ACETATE 50% VISCOSE

WIDTH: 124 cm / 128 cm

WEIGHT: 260 g/ml - 203 g/m2

COLOURS: Ask for colour card!

MIN: 35 m. Min



Art. 5604
(1047) BRINATO

CADY VISCOSE/ACETATE WITH METALLIC FROSTING

WEAVE STRUCTURE: RASO DA 5

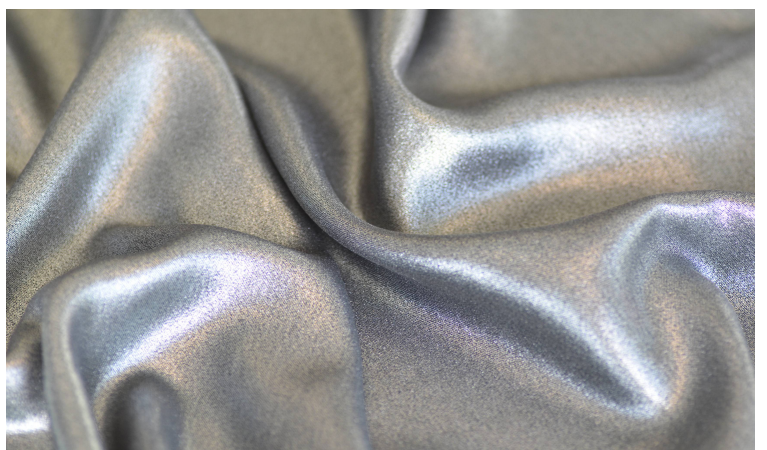
COMPOSITION: 50% ACETATE 50% VISCOSE

WIDTH: 136 cm / 140 cm

WEIGHT: 260 g/ml - 186 g/m2

COLOURS: Ask for colour card!

MIN: 35 m. Min



Art. 5684
(4665) BRINATO

CADY VISCOSE STRETCH WITH METALLIC FROSTING

WEAVE STRUCTURE: RASO DA 5 DF TRAMA

COMPOSITION: 95%VISCOSE 5%ELASTANE

WIDTH: 141 cm / 145 cm

WEIGHT: 289 g/ml - 199 g/m2

COLOURS: Ask for colour card!

MIN: 35 m. Min

